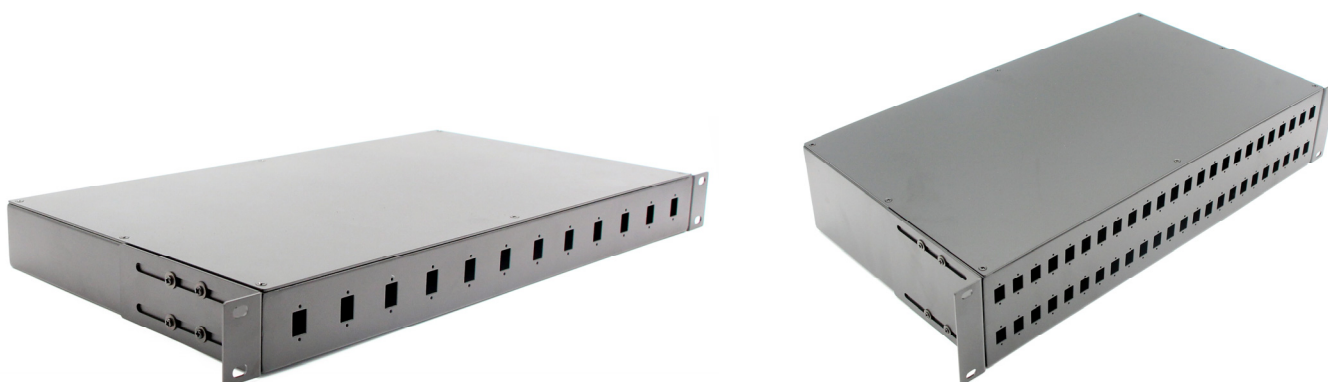


# DATASHEET

## Fixed Rack mount Fiber patch panel

Designed for the data center environment, serves as a protection function for fiber management

---



OMC INDUSTRY CO.LIMITED

2018|En version1.0



## 19' 1RU Fixed rack mount patch panel

### Products Description

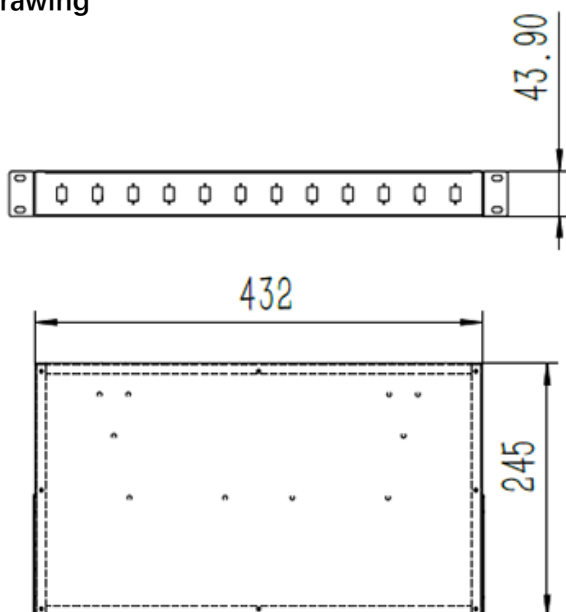
The Fiber Optic Patch panel is a kind of fiber optic management products used to distribute and protect the optical fiber links in FTTH Network. It is available for the distribution and terminal connection of various kinds of optical fiber system. These units are available in sizes that fit the most common distribution requirements.

OMC provide is a kind of high quality, micro sized fiber optical Patch panel made of quality cold-rolled steel sheet and undergoes static plastic spraying treatment, which can be used to mount SC/LC/FC/ST/E2000/MPO adapter, the box can be installed on the indoor wall and terrace.

### Products Details

<b>Product Name</b>	19' 1RU Fixed rack mount patch panel	 	
<b>Enclosure Type</b>	19' Rack Mountable		
<b>Installation</b>	Standard EIA 19" Rack		
<b>Compliant</b>	TIA/EIA-568-C.3		
<b>Part No.</b>	L2xxxx	<b>Material</b>	CRS Cold rolled steel
<b>Connection Port</b>	2 -24 Ports SC/FC/ST/LC/ST/E2000/MPO	<b>Dimensions (HxWxD)</b>	482*245*44.5mm

### Drawing



### Full loaded accessories

12F Color-Coded Fiber pigtails set



Fiber Adapter



60mm Splice Sleeve/Smouv



Cage Nut



Blank port cap



## 19' 2RU Fixed rack mount patch panel

### Products Description

The Fiber Optic Patch panel is a kind of fiber optic management products used to distribute and protect the optical fiber links in FTTH Network. It is available for the distribution and terminal connection of various kinds of optical fiber system. These units are available in sizes that fit the most common distribution requirements.

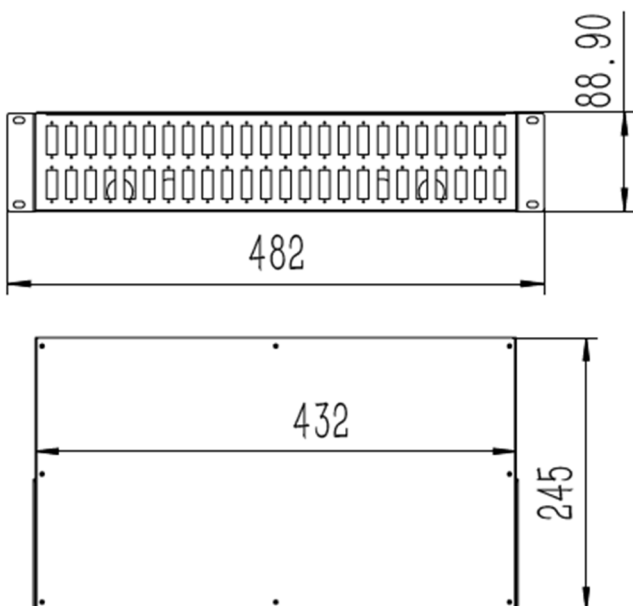
OMC provide is a kind of high quality, micro sized fiber optical Patch panel made of quality cold-rolled steel sheet and undergoes static plastic spraying treatment, which can be used to mount SC/LC/FC/ST/E2000/MPO adapter, the box can be installed on the indoor wall and terrace.

### Products Details

<b>Product Name</b>	19' 2RU Fixed rack mount patch panel		
<b>Enclosure Type</b>	19' Rack Mountable		
<b>Installation</b>	Standard EIA 19" Rack		
<b>Compliant</b>	TIA/EIA-568-C.3		
<b>Part No.</b>	L4xxxx	<b>Material</b>	CRS Cold rolled steel
<b>Connection Port</b>	6 –48 Ports SC/FC/ST/LC/ST/E2000/MPO	<b>Dimensions (HxWxD)</b>	482*245*88.9mm



### Drawing



### Full loaded accessories

12F Color-Coded Fiber pigtails set



Fiber Adapter



60mm Splice Sleeve/Smouv



Cage Nut



Blank port cap




## 19' 1RU Fixed rack mount patch panel-Full cover

### Products Description

The Fiber Optic Patch panel is a kind of fiber optic management products used to distribute and protect the optical fiber links in FTTH Network. It is available for the distribution and terminal connection of various kinds of optical fiber system. These units are available in sizes that fit the most common distribution requirements.

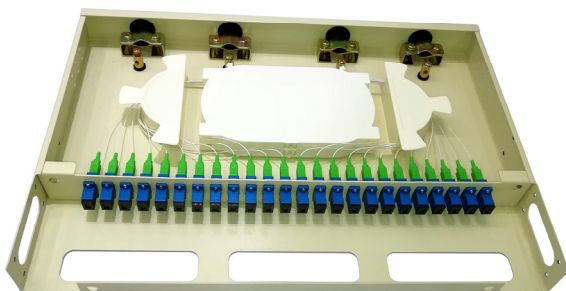
OMC provide is a kind of high quality, micro sized fiber optical Patch panel made of quality cold-rolled steel sheet and undergoes static plastic spraying treatment, which can be used to mount SC/LC/FC/ST/E2000/MPO adapter, the box can be installed on the indoor wall and terrace.

### Products Details

<b>Product Name</b>	19' 1RU Fixed rack mount patch panel -Full cover	 <p>Unloaded</p>	
<b>Enclosure Type</b>	19' Rack Mountable		
<b>Installation</b>	Standard EIA 19" Rack		
<b>Compliant</b>	TIA/EIA-568-C.3		
<b>Part No.</b>	L6xxxx	<b>Material</b>	CRS Cold rolled steel
<b>Connection Port</b>	2 -24 Ports SC/FC/ST/LC/ST/E2000/MPO	<b>Dimensions (HxWxD)</b>	482*300*44.5mm

### Full loaded accessories

Full loaded



12F Color-Coded Fiber pigtails set



Fiber Adapter



60mm Splice Sleeve/Smouv

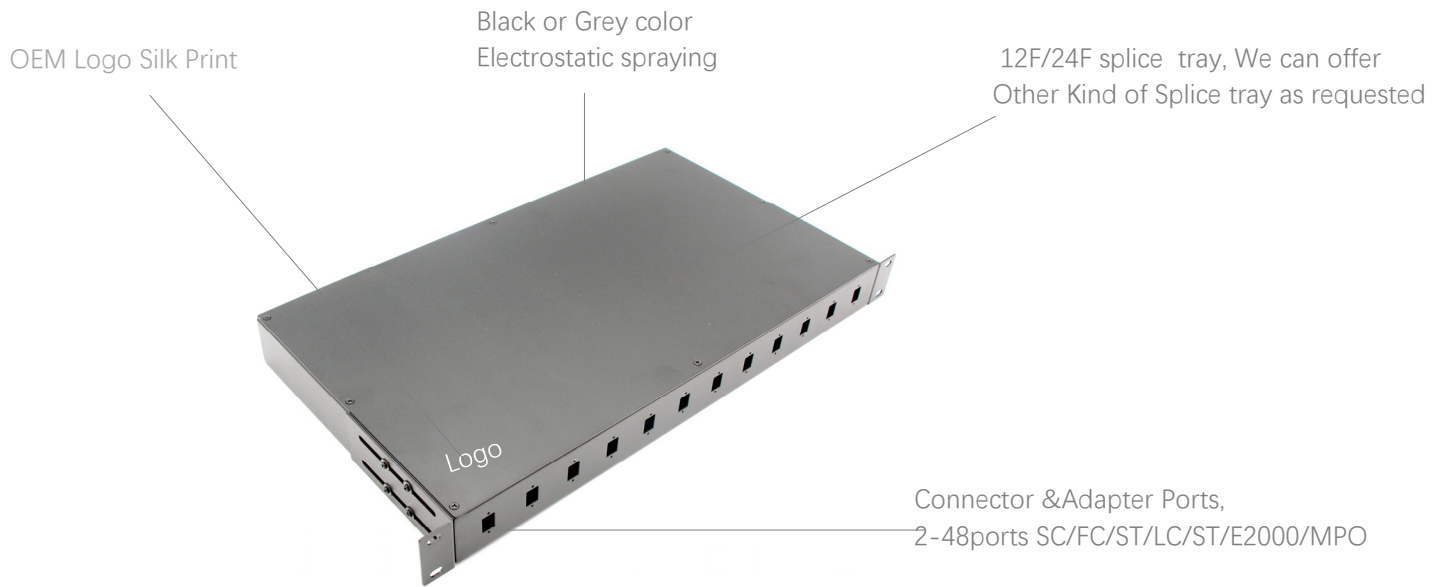


Cage Nut



Blank port cap

## Products Details



## Features

Made of cold-rolling steel, static spreading-plastic, small dimension and exquisite and easy for operation

The box has a pothook, which is convenient to install and dismantle

The splice tray could be piled one upon another, flexible to turn; the curve radius of the coiled spear fibers should be guaranteed to be over 37.5mm in the splice tray

The box is of unique structure, reasonable layout, and has adequate room for operation

Adjustable clamp seal ring and reinforce configuration, which could adjust different sizes of cables flexibly to make sure the cables are clamp tightly

The indoor type is of excellent seal performance, which could prevent water from entering effectively

Can be installed with LC adapter

Up to 96 cores splice capacity MAX in 2U patch panel

Rack Mount and Sliding drawer design both available

## Application:

Optical Network Frame management system

FTTX project,

Data center



## Fixed Rack mount Fiber patch panel

### Order Index

Products	Fiber port	Port Qty	Fiber mode	Load
L2-19' 1RU Fixed rack mount patch panel	1- LC DX	1- 6 ports	0- Empty Panel	0-Empty Panel
L3-19' 1RU Slide Rail Rack mount patch panel	2- LC Quad	2-8 ports	1- G657A1	1- Loaded with pigtail and adapter
L4-19' 2RU Fixed rack mount patch panel	3- SC SX	3-12 ports	2-G657A2/B2	2-Loaded with adapter
L5-19' 2RU Slide Rail Rack mount patch panel	4- SC DX	4-16 ports	3-G657B3	
L6- 19' 1RU Fixed rack mount patch panel -Full cover	5- FC Square	5-24 ports	4-BIF OM1	
L7- 19' 1RU Slide rail rack mount patch panel-Full cover	6- FC D hole	6-32 ports	5-BIF OM2	
L8- 19' 1RU Slide Drawer Rack mount patch panel	7-ST D hole	7-48 ports	6-BIF OM3	
LP- 19' 1RU Side pull out Rack mount Patch panel	8-E2000 SX	8-72 ports	7-BIF OM4	
LT-19' 3RU Slide Drawer Rack mount patch panel	9-MTRJ	9-96 ports	8-BIF OM5	
LQ-19' 4RU Slide Drawer Rack mount patch panel	0-MPO/MTP			